

Tritex® EXM Specifications

Coming Soon

The Tritex EXM Intelligent Explosion Proof servo motor drive is designed for maximum application flexibility in valve control. Paired with a precision servo gearhead it's an ideal solution for applications requiring fast, precise modulation. When paired with an Exlar KX90 roller screw linear actuator, it becomes a linear valve actuator capable of a max modulating thrust of 3500 lbf (15.5 kN).

Benefits

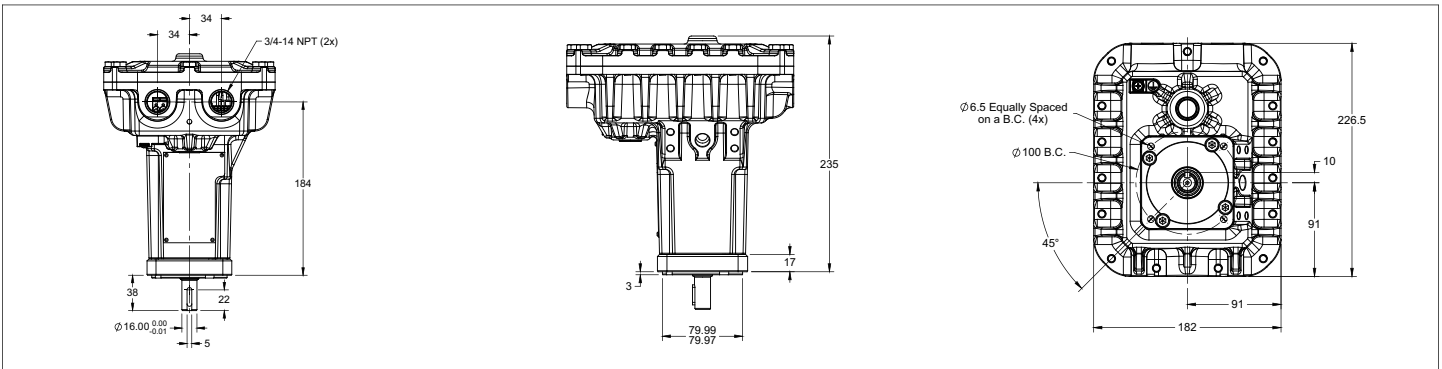
- 100% duty cycle for continuous modulation
- Brushless servo design with 150% overload for valve jam protection
- Absolute position sensing on power loss for reliable control
- Compact, lightweight design



Performance	
Min Modulating Torque	2.1 lbf-in (0.237 Nm)
Max Modulating Torque	21 lbf-in (2.37 Nm)
Max Overload Torque*	31.5 lbf-in (3.56 Nm)
Max Speed**	650 rpm
*Unit is capable of 150% rated torque for 6 s	
**Reduced operating speed at 12 Vdc	
Endurance & Life	
Endurance	10,000+ Starts, 3600+ starts per hour
Duty	Class D continuous modulating, 100% duty cycle
Life	10,000,000+ cycles over 10 years
Dynamic Load Rating	2,075 lbf (9.23 kN)
Power	
Input Voltage	12-24 Vdc, 9-32 Vdc max range
Max Current	10 A @ max thrust/torque, 1 A @ nominal thrust/torque
Communication & Commissioning	
Serial Interface	Isolated Modbus RTU (RS-485), max baud rate 38.4 k
Software Tool	Free-to-download Expert PC commissioning tool
Inputs & Outputs	
Digital Inputs	3 - Isolated, 9-30 Vdc
Digital Outputs	2 - Isolated, 9-30 Vdc
Analog Input	1 - Isolated, 4-20 mA, position / thrust demand 0.1% resolution, 0.5% linearity over temperature range
Analog Output	1 - Isolated, 4-20 mA, position / thrust demand 0.1% resolution, 0.5% linearity over temperature range

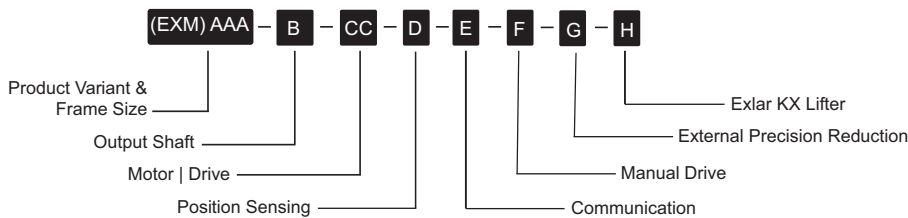
Environmental & Mounting	
Operating Temperature	-40 to 149 °F (-40 to 65 °C)
Ambient Storage Temperature	-58 to 185 °F (-50 to 85 °C)
Enclosure	Type 4X, IP66, IP67, IP69K
Mounting	Face mount, any orientation, with valve adapter
Noise	Less than 70 dB operation
Weight	18.5 lbs (8.4 kg)
Conduit Entries	3/4 NPT x2
Standards & Approvals	
European ATEX Directive	Gas - Group II, Cat 2G/D, Ex db h IIB T5 Gb
International Hazardous Area IECx	Gas - Ex db h IIB T5 Gb
US Hazardous Area	Gas - Class 1, Division 1, Gas group C, D, T5
Canadian Hazardous Area	Gas - Class 1, Division 1, Gas group C, D, T5
Standards	CE, REACH, RoHS, ISO 22153

Dimensions



Ordering Info

Sample Product Number: EXM090-K-BA-A-R-B-NNN-NNNN



Learn more about the Tritex EX



EXM = Product Variant

EXM = Tritex Electric Explosion Proof Servo Drive Motor

AAA = Actuator Frame Size

090 = 3.54 (90 mm)

B = Output Shaft

K = Keyed

CC = Motor | Drive

BA = Standard Motor (B), Standard Servo Drive (A), 12-24 Vdc Input

D = Position Sensing

A = Absolute Position Sensing on Power Loss

E = Communication

R = Standard Modbus RTU (RS-485)

F = Manual Drive

B = Backshaft Manual Operation
H = External Manual Operation

G = External Precision Reduction

NNN = None

H = Exlar KX Lifter

NNNN = None
KX90 = KX90-0125-05-N10-EXM090 Motor Mount