

Tritex® EXA Specifications

Coming Soon

The Tritex EXA Intelligent Explosion Proof linear actuator is designed specifically for valve control applications. This electric servo motor roller screw design provides unparalleled reliability and fast, precise motion for the most demanding applications. The Tritex EXA is an ideal solution for companies that need powerful, proven, and precise actuator solution.

Benefits

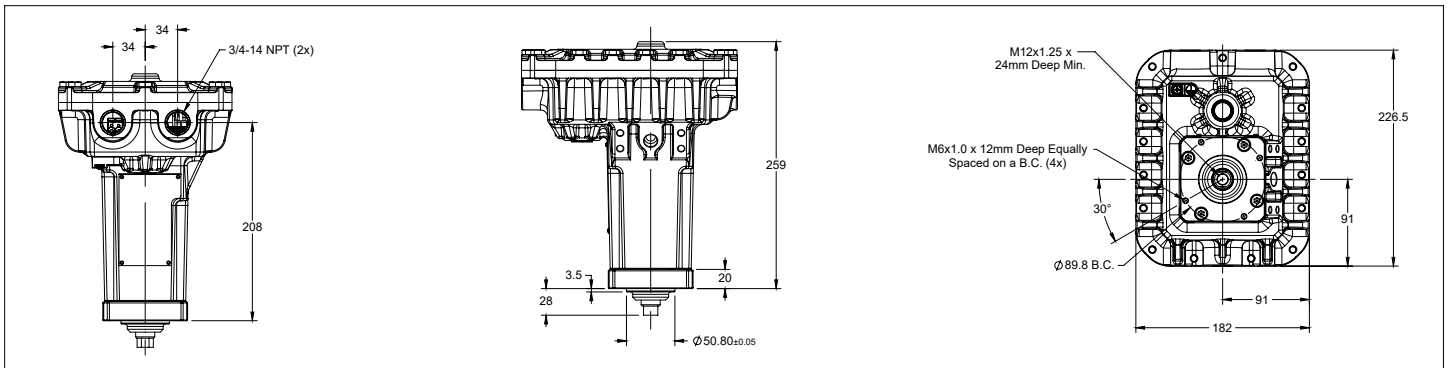
- 100% duty cycle for continuous modulation
- Fast valve close times in as little as 1 second
- Robust roller screw drive train for zero maintenance and industry leading life
- Brushless servo design with 150% overload for valve jam protection
- Advanced valve seating control extends valve life
- Absolute position sensing on power loss for reliable control
- Compact, lightweight design



Performance	
Min Modulating Thrust	200 lbf (0.88 kN)
Max Modulating Thrust	1000 lbf (4.4 kN)
Max Seating Thrust*	1500 lbf (6.67 kN)
Max Speed**	1 in/s (25.4 mm/s)
Max Stroke	4 in (100 mm)
*Seating Thrust values shown are forces available to close a valve tightly at the end of travel.	
**Reduced operating speed at 12 Vdc	
Endurance & Life	
Endurance	10,000+ Starts, 3600+ starts per hour
Duty	Class D continuous modulating, 100% duty cycle
Life	10,000,000+ cycles over 10 years
Dynamic Load Rating	2,075 lbf (9.23 kN)
Power	
Input Voltage	12-24 Vdc, 9-32 Vdc max range
Max Current	10 A @ max thrust/torque, 1 A @ nominal thrust/torque
Communication & Commissioning	
Serial Interface	Isolated Modbus RTU (RS-485), max baud rate 38.4 k
Software Tool	Free-to-download Expert PC commissioning tool
Inputs & Outputs	
Digital Inputs	3 - Isolated, 9-30 Vdc
Digital Outputs	2 - Isolated, 9-30 Vdc
Analog Input	1 - Isolated, 4-20 mA, position / thrust demand 0.1% resolution, 0.5% linearity over temperature range
Analog Output	1 - Isolated, 4-20 mA, position / thrust demand 0.1% resolution, 0.5% linearity over temperature range

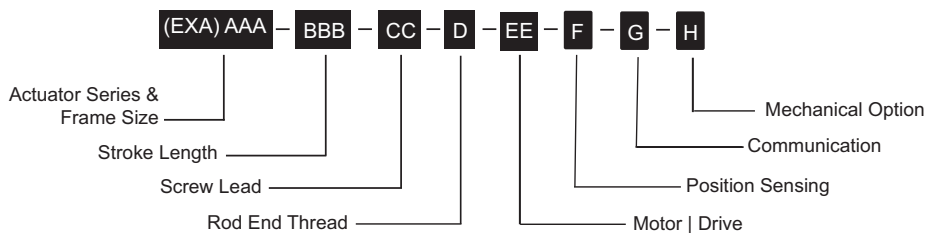
Environmental & Mounting	
Operating Temperature	-40 to 149 °F (-40 to 65 °C)
Ambient Storage Temperature	-58 to 185 °F (-50 to 85 °C)
Enclosure	Type 4X, IP66, IP67, IP69K
Mounting	Face mount, any orientation, with valve adapter
Noise	Less than 70 dB operation
Weight	19.5 lbs (8.85 kg)
Conduit Entries	3/4 NPT x2
Standards & Approvals	
European ATEX Directive	Gas - Group II, Cat 2G/D, Ex db h IIB T5 Gb
International Hazardous Area IECx	Gas - Ex db h IIB T5 Gb
US Hazardous Area	Gas - Class 1, Division 1, Gas group C, D, T5
Canadian Hazardous Area	Gas - Class 1, Division 1, Gas group C, D, T5
Standards	CE, REACH, RoHS, ISO 22153

Dimensions



Ordering Info

Sample Product Number: EXA090-075-01-B-BA-A-R-I-NNN



Learn more about the Tritex[®] EX



EXA = Product Variant
EXA = Tritex Electric Explosion Proof Valve Actuator, Linear

AAA = Actuator Frame Size
090 = 3.54 (90 mm)

BBB = Stroke Length
075 = Max stroke 3 in (75 mm)

CC = Drive Train Screw Lead
01 = 0.1 in (2.54 mm) Roller Screw

D = Main Rod Thread Interface
B = Female Metric, M12x1.25

EE = Motor | Drive
BA = Standard Motor (B), Standard Servo Drive (A), 12-24 Vdc Input

F = Position Sensing
A = Absolute Position Sensing on Power Loss

G = Communication
R = Standard Modbus RTU (RS-485)

H = Mechanical Option
I = Integral Anti-Rotate
N = None, (external anti-rotate required)